

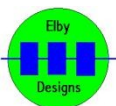


CGS334 ASR

Construction Guide

Revision 2.0

May 10th, 2019

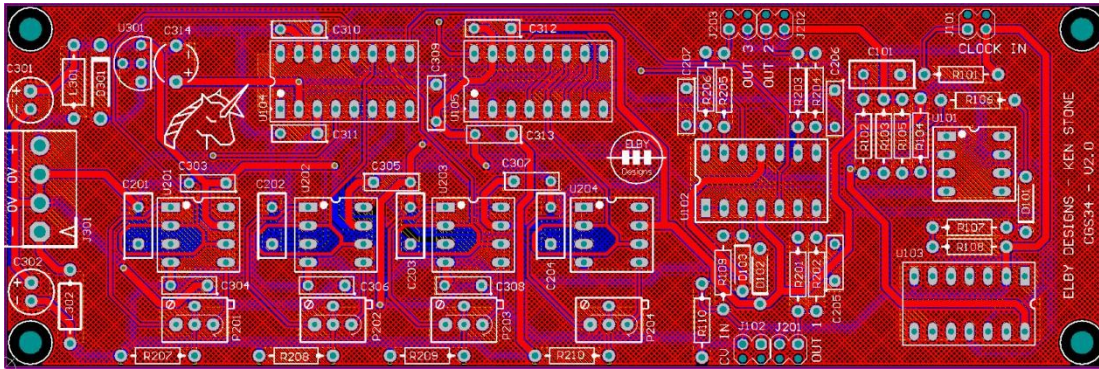


ELBY Designs - Laurie Biddulph

5 Dunning Avenue, George Town, TAS 7253, Australia

elby-designs@bigpond.com <http://www.elby-designs.com>

CGS334 ASR



[3D Model](#)
[Schematics](#)

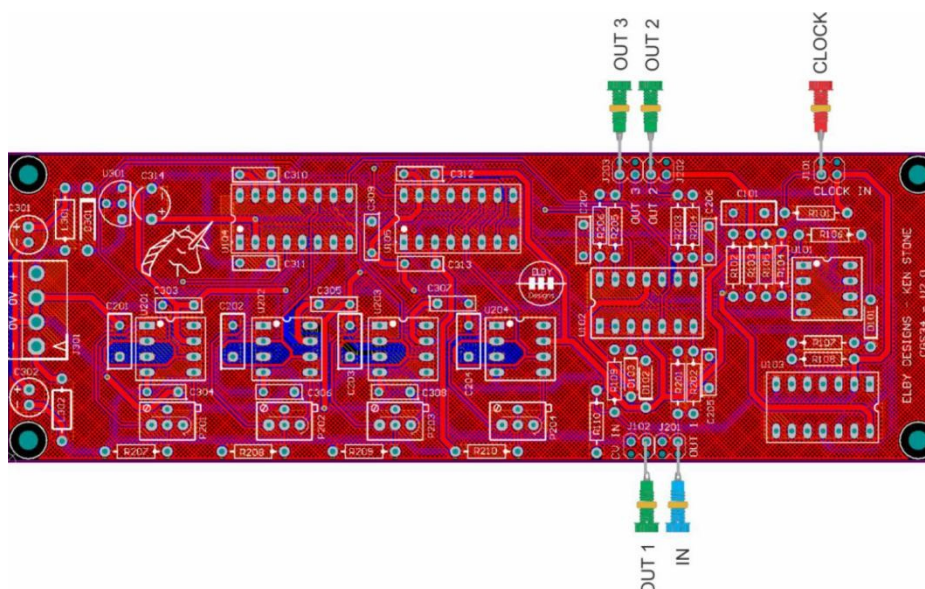
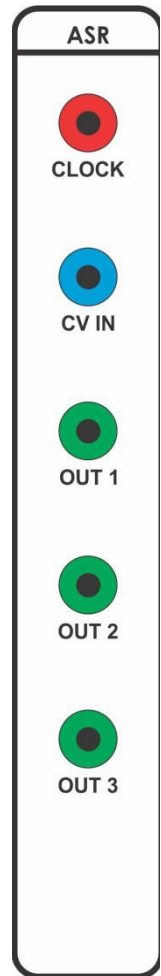
Constructors should refer to the [Component Overlay](#) along with the [PCB Bill of Materials](#) for the current value of all components and [General Construction Notes](#) for general PCB assembly guidelines.

Calibration

We are starting to supply kits with LF356 instead of the CA3140. These alternate kits do not have the 4 trimpots P201, P202, P203 or P204.

In kits that do have these trimpots then the following steps can be implemented:-

1. Connect 0V to the CV IN input
2. Generate a minimum of 4 [CLOCK] pulses
3. Measure pin 6 of U201 and adjust P201 for a 0.0V output
4. Repeat for U202/P202, U203/P203, U204/P204



[Wiring for CGS334](#)
[Panel Bill of Materials](#)

