



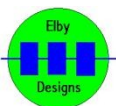
## CGS501 NCOM

### Construction Guide

Revision 0.1

PCB Revision 0.1

December 18, 2020

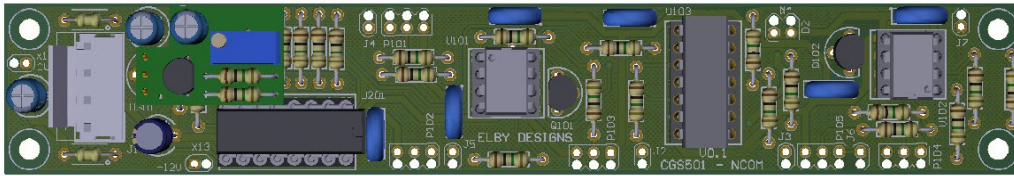


**ELBY Designs - Laurie Biddulph**

3 Therese Street, Bridport, TAS 7262, Australia

[elby-designs@bigpond.com](mailto:elby-designs@bigpond.com) <http://www.elby-designs.com>

# CGS501 NCOM



## 3D Model

Constructors should refer to the printed [Component Overlay](#) along with the [PCB Bill of Materials](#) for the current value of all components and [General Construction Notes](#) for general PCB assembly guidelines.

## Main PCB

Do not fit U301 to the main PCB, in its place fit the 3-pin header.

R117 should be connected as shown to the top leg of R108 and to the right-hand pad of P104

Fit C101 across pins U102\_1 & U102\_2 on the underside of the PCB

Cut track on underside at U103\_4. Fit a wire link from U201\_15 to U103\_6.

## Chicklet PCB

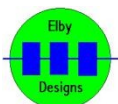
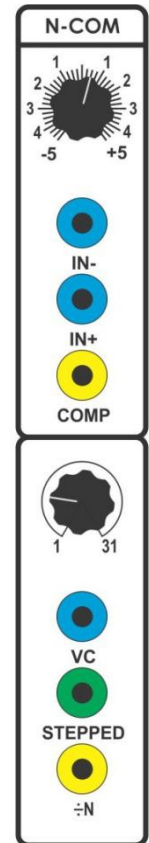
Assemble the [Chicklet PCB](#).

When [complete](#) install the sub-assembly in to the location for U301 ensuring that the installed PCB does not contact any components on the main PCB.

## Calibration

Monitor TP1

Adjust P401 for a reading of 5.155VDC

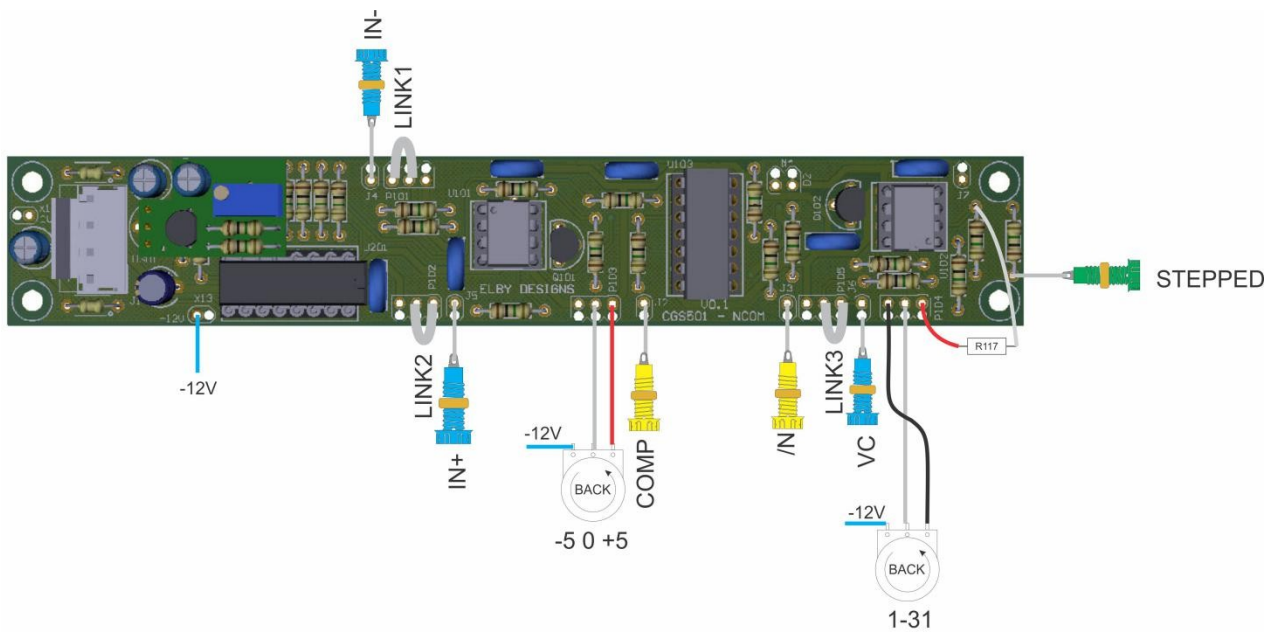


**ELBY Designs - Laurie Biddulph**

3 Therese Street, Bridport, TAS 7262, Australia

[elby-designs@bigpond.com](mailto:elby-designs@bigpond.com) <http://www.elby-designs.com>

## Wiring



[Wiring Guide as used in the BoCGS – click for larger image](#)

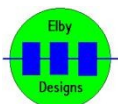
### [Panel Bill of Materials](#)

Due to space constraints, the BoCGS version of the build does not include attenuator controls for the CLOCK inputs and these are shown in the above diagram with links. If you require to add these controls then P101 and P102 should be wired to 100K linear pots.

### Corrections:

Please note that there are some small errors with the V0.1 revision which require the following wiring changes as shown in the [Wiring Guide](#):-

1. Pots P103 and P104 must have their anti-clockwise pin hard-wired to the -12V terminal
2. [STEPPED] jack must be wired to the lower leg of R110 as shown
3. R117 should be wired between the upper leg of R108 and the right-hand pad of P104



**ELBY Designs - Laurie Biddulph**

3 Therese Street, Bridport, TAS 7262, Australia

[elby-designs@bigpond.com](mailto:elby-designs@bigpond.com) <http://www.elby-designs.com>