

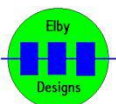


## CGS504 Preamp-Detector

### Construction Guide

Revision 0.0

March 8<sup>th</sup>, 2019

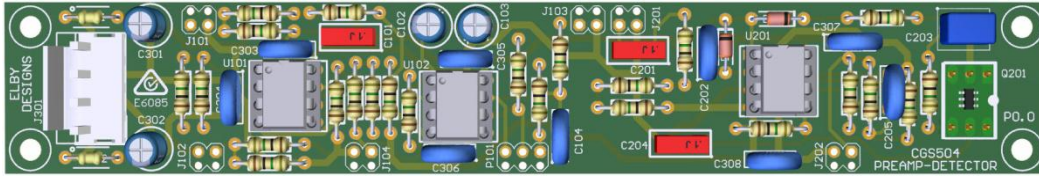


**ELBY Designs - Laurie Biddulph**

9 Follan Close, Kariiong, NSW 2250, Australia

[elby-designs@bigpond.com](mailto:elby-designs@bigpond.com) <http://www.elby-designs.com>

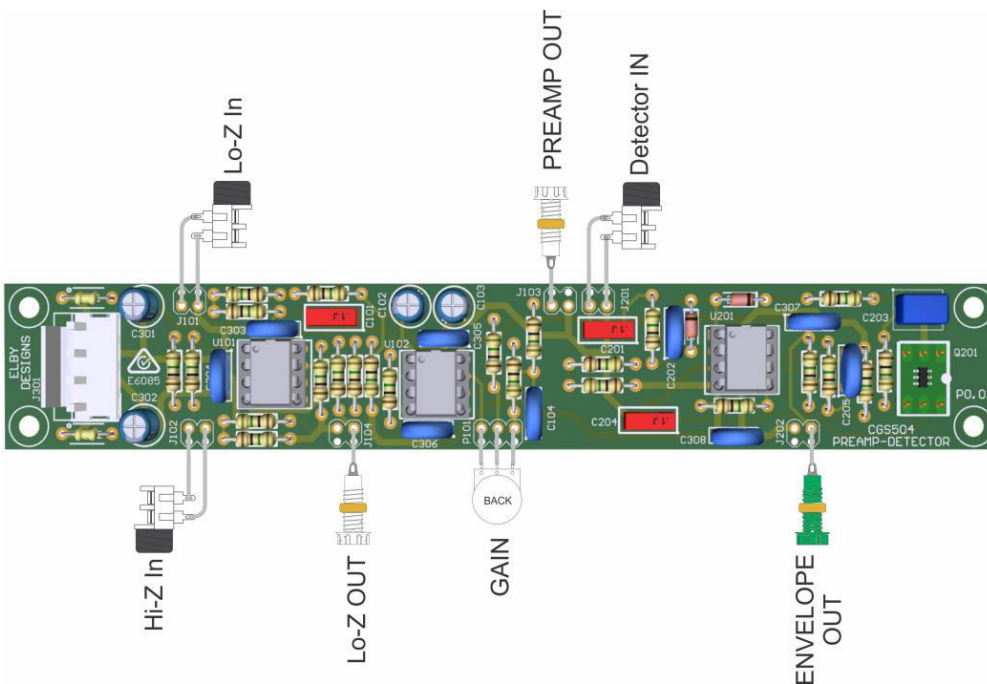
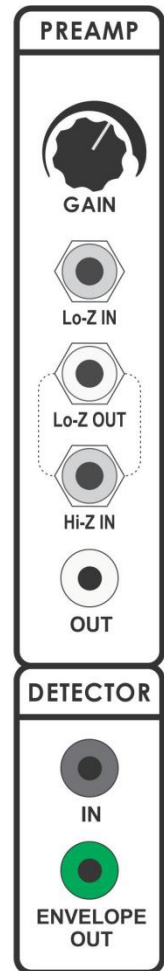
# CGS504 Preamp-Detector



[3D Model](#)

Constructors should refer to the printed [Component Overlay](#) along with the [PCB Bill of Materials](#) for the current value of all components and [General Construction Notes](#) for general PCB assembly guidelines. You are advised to check all of these documents on our website to ensure you have the latest copy.

The CGS504 requires a matched PNP transistor pair in the Envelope Detector Stage at Q201 for optimum performance. Please refer to [Dual-Matched Transistors](#) for further details.



[Example wiring – click for larger image](#)  
[Full Panel Bill of Materials](#)

