

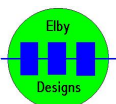


## NPN Transistor Matcher

### Construction Guide

Revision 1.0

May 5<sup>th</sup>, 2019

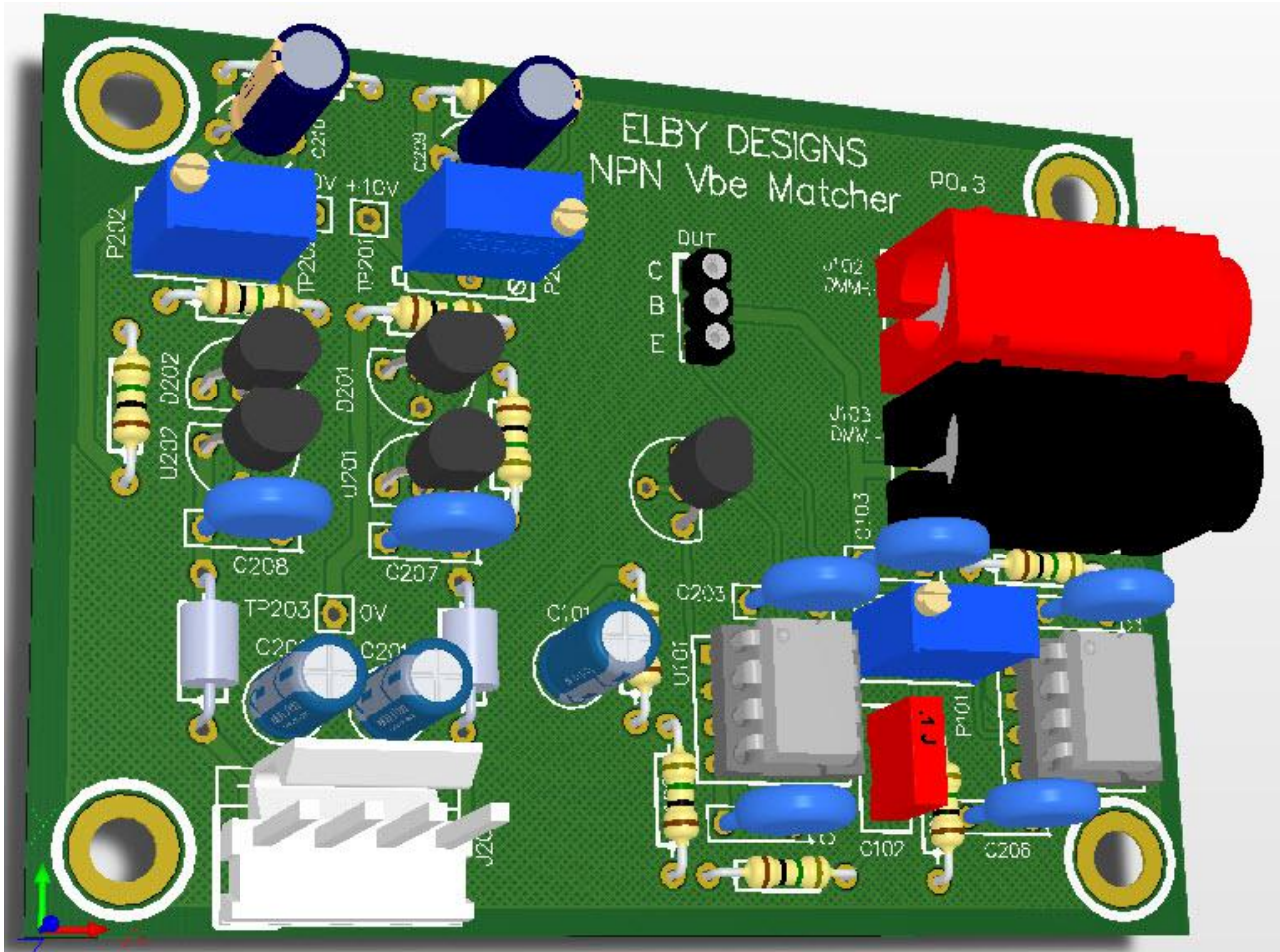


**ELBY Designs - Laurie Biddulph**

9 Follan Close, Kariiong, NSW 2250, Australia

[elby-designs@bigpond.com](mailto:elby-designs@bigpond.com) <http://www.elby-designs.com>

# NPN Transistor Matcher



Construction of the NPN Transistor Matcher requires the assembly of 1 board:-

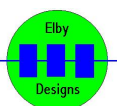
NPN Transistor Matcher PCB ([3D Model](#)) ([PCB Overlay](#))

Constructors should refer to the PCB Component Overlay for any specific comments regarding the board assembly, the [Bill of Materials](#) for the current value of all components and [General Construction Notes](#) for general PCB assembly guidelines.

1. Fit all components to the PCB

## Calibration

1. Monitor TP201
2. Adjust P201 for 10.0V
3. Monitor TP202
4. Adjust P202 for -10.0V
5. Fit a jumper between DUT\_B and DUT\_E
6. Monitor the output at J102
7. Adjust P101 for 0V



**ELBY Designs - Laurie Biddulph**

9 Follan Close, Kariiong, NSW 2250, Australia

[elby-designs@bigpond.com](mailto:elby-designs@bigpond.com) <http://www.elby-designs.com>