

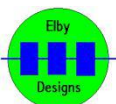


ED116 Extended SH-Noise Generator

Construction Guide

Revision 1.1

June 4th, 2019



ELBY Designs - Laurie Biddulph

9 Follan Close, Kariong, NSW 2250, Australia

elby-designs@bigpond.com <http://www.elby-designs.com>

ED116 Extended SH-Noise Generator

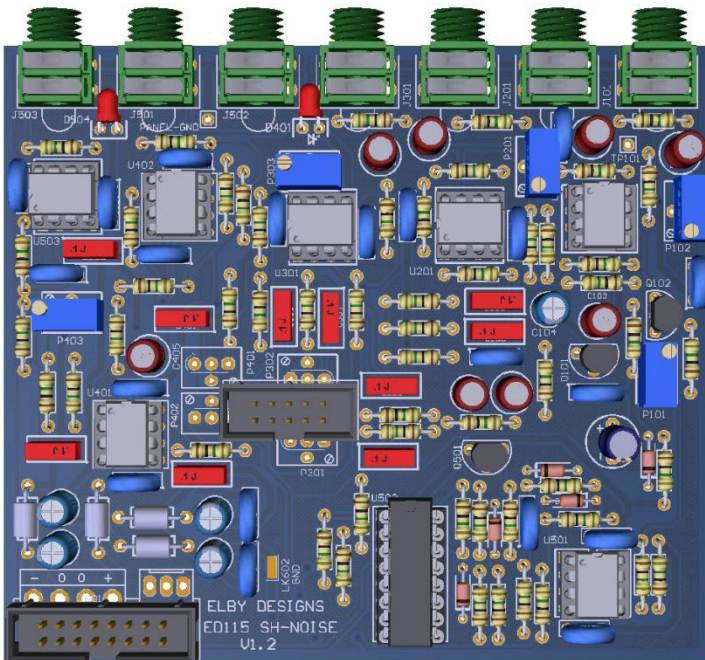
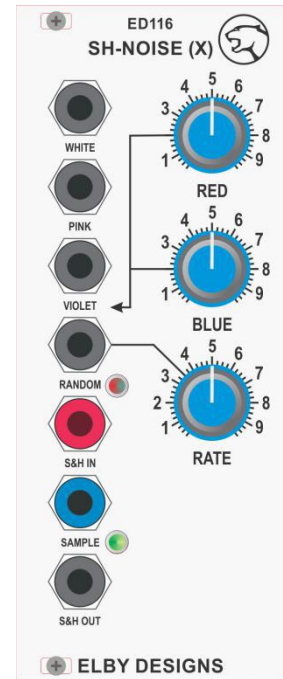
Construction of the ED116 requires the assembly of 2 boards:-

Column 1 – ED115 PCB ([3D Model](#)) ([PCB Overlay](#))

Column 2 - ED116 PCB ([3D Model](#)) ([PCB Overlay](#))

Constructors should refer to the printed Component Overlays for any specific comments regarding the board assembly, the [Bill of Materials](#) for the current value of all components and [General Construction Notes](#) for general PCB assembly guidelines.

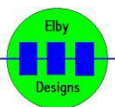
1. Fit all components to the ED115 board except the 2x LEDs D401 and D504.
NB: P301, P302, P401 & P402 are Do Not Fit components
2. Fit the 2x lens mounts to the front panel
3. Offer the sub-assembly to the front panel and secure using the supplied nuts.
4. Form the LED legs noting their orientation on the PCB and insert in to the sub-assembly.
5. Locate the LEDs in to their respective lens mounts and solder into place
6. Fit all components to the ED116 PCB.
7. Do not install the ED116 sub-assembly until after calibration has been completed
8. Install the IDC cable J302 between J302 on the ED115 PCB and J1 on the ED116 PCB
9. Install the main IDC power cable to J601 on the ED115 PCB



Calibration

Calibrate the ED115 as per the [ED115 Build Guide](#). NB: You will need to remove the Column 2 assembly from the front panel to gain full access to the trimpots on the ED115 PCB.

Offer the ED116 sub-assembly to the front panel and secure using the supplied nuts and washers



ELBY Designs - Laurie Biddulph

9 Follan Close, Kariong, NSW 2250, Australia

elby-designs@bigpond.com <http://www.elby-designs.com>