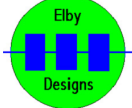


Cannot open file C:\Work\Pixie\WASP\pcb-link.jpg

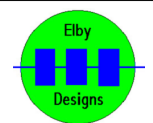
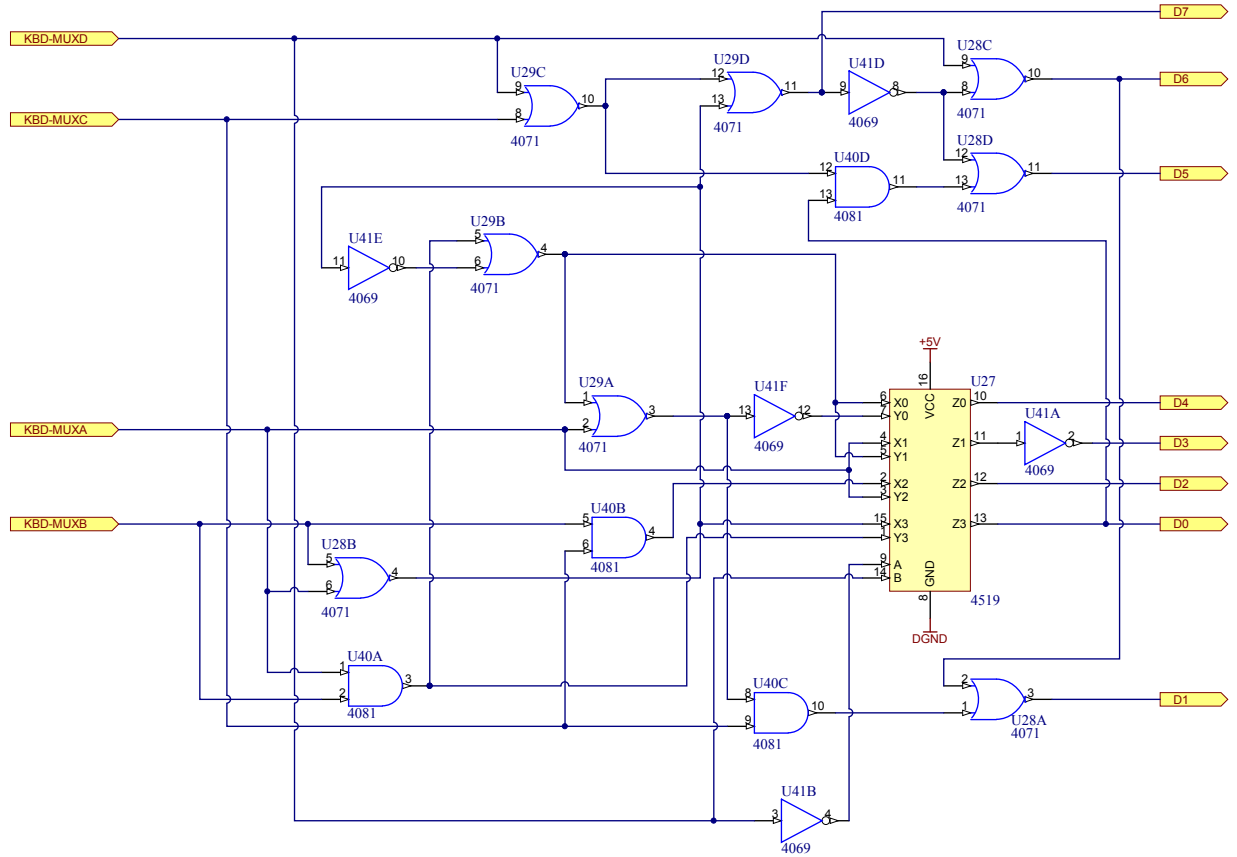


9 Follan Close  
Kariang  
NSW 2250  
Australia

# EDP WASP

## Keyboard Multiplexer

Size A3	FCSM No. 26/08/2013	DWG No. KybdMux.schdoc	Rev 1
Scale	Laurie Biddulph	Sheet 1 of 15	

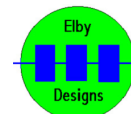
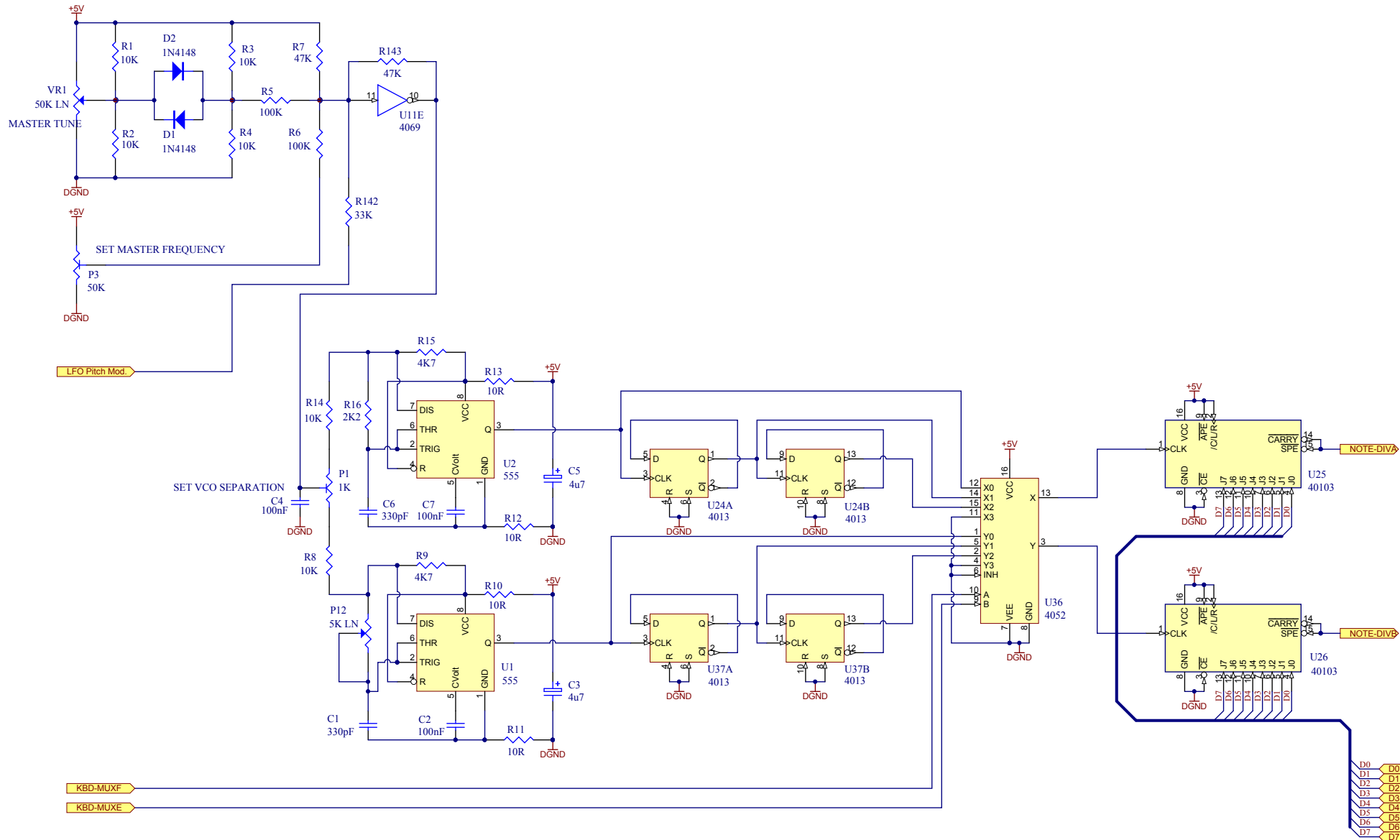


9 Follan Close  
Kariang  
NSW 2250  
Australia

# EDP WASP

## Note Decoder

Size A3	FCSM No. 26/08/2013	DWG No. NoteEncoder.schdoc	Rev 1
Scale	Laurie Biddulph	Sheet 2 of 15	

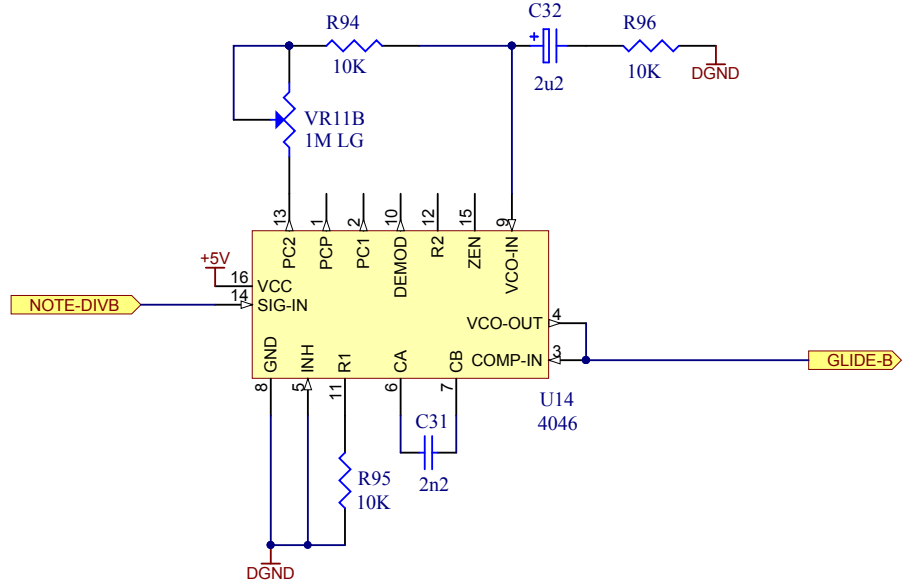
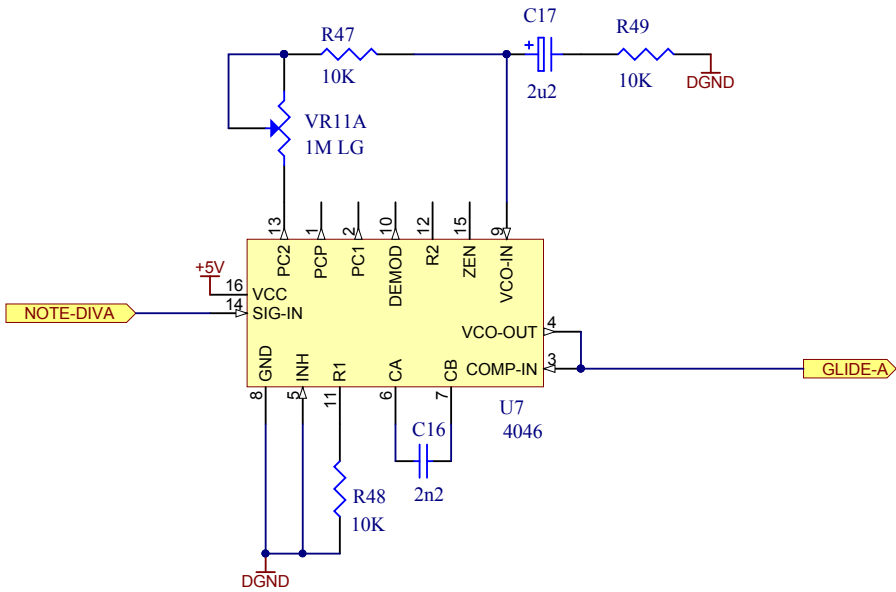


9 Follan Close  
Kariang  
NSW 2250  
Australia

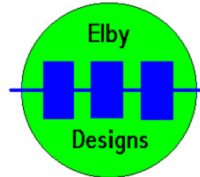
## EDP WASP

### Master Oscillators

Size A3	FCSM No. 26/08/2013	DWG No. MasterOsc.schdoc	Rev 1
Scale	Laurie Biddulph	Sheet 3 of 15	



NOTE:  
C17 and C32 should, ideally, be chosen to have matching leakage rates

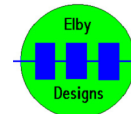
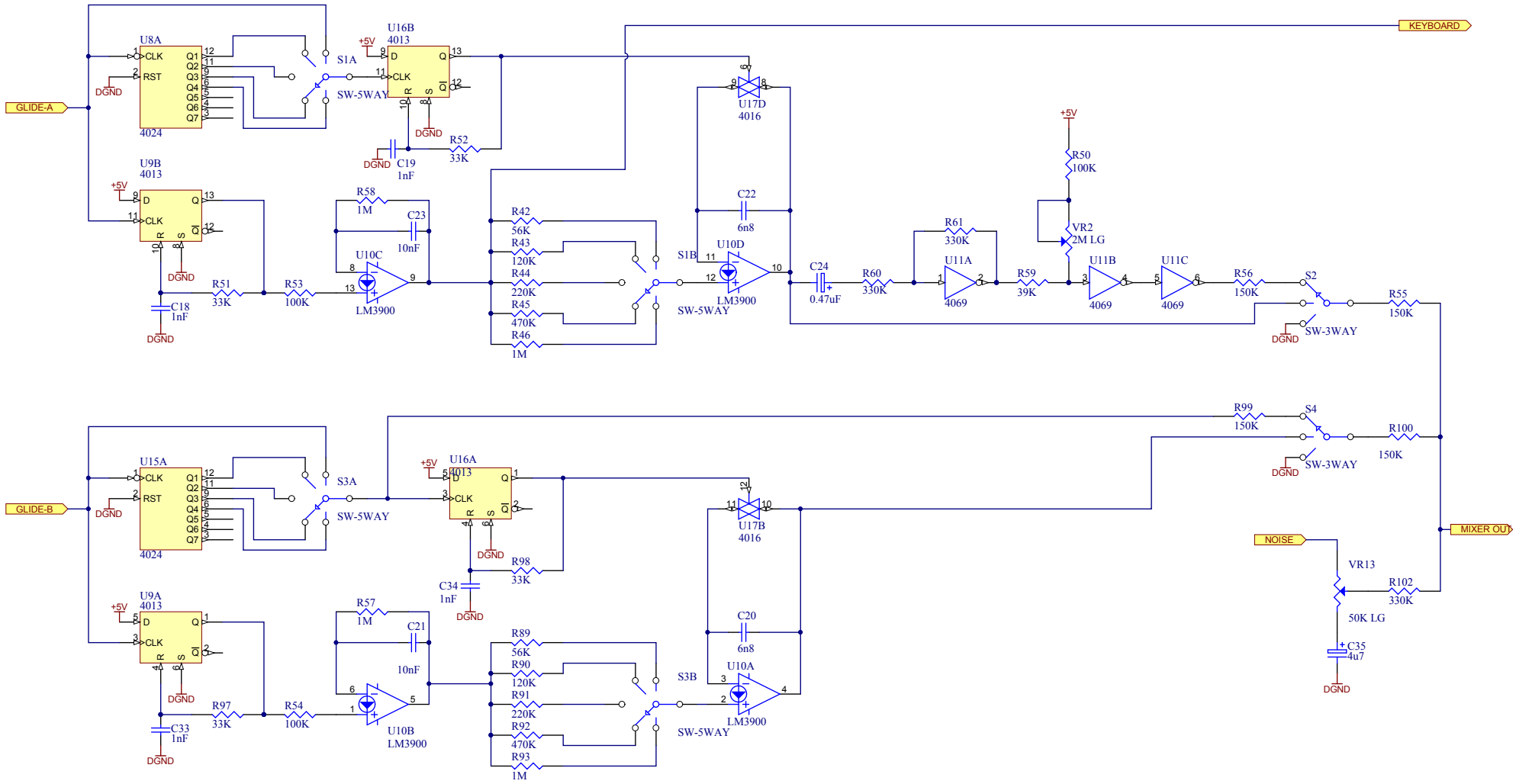


9 Follan Close  
Kariong  
NSW 2250  
Australia

# EDP WASP

## Glide Circuit

Size A4	FCSM No. 26/08/2013	DWG No. Glide.schdoc	Rev 1
Scale		Laurie Biddulph	Sheet 4 of 15

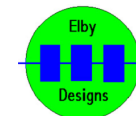
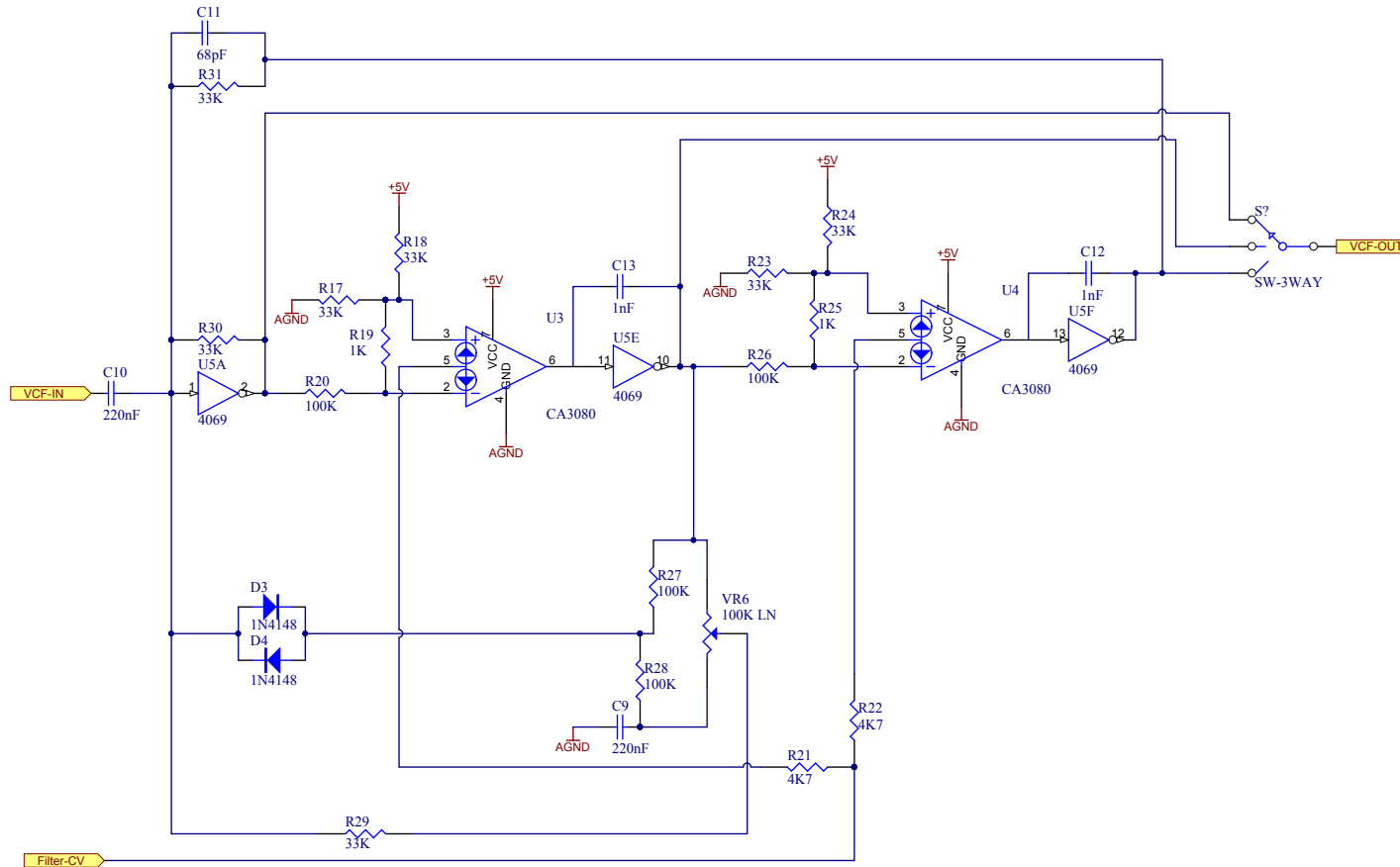


9 Follan Close  
Kariang  
NSW 2250  
Australia

## EDP WASP

### Dual Sawtooth Generator

Size A3	FCSM No. 26/08/2013	DWG No. DualVCO.schdoc	Rev 1
Scale	Laurie Biddulph	Sheet 5 of 15	

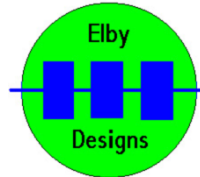
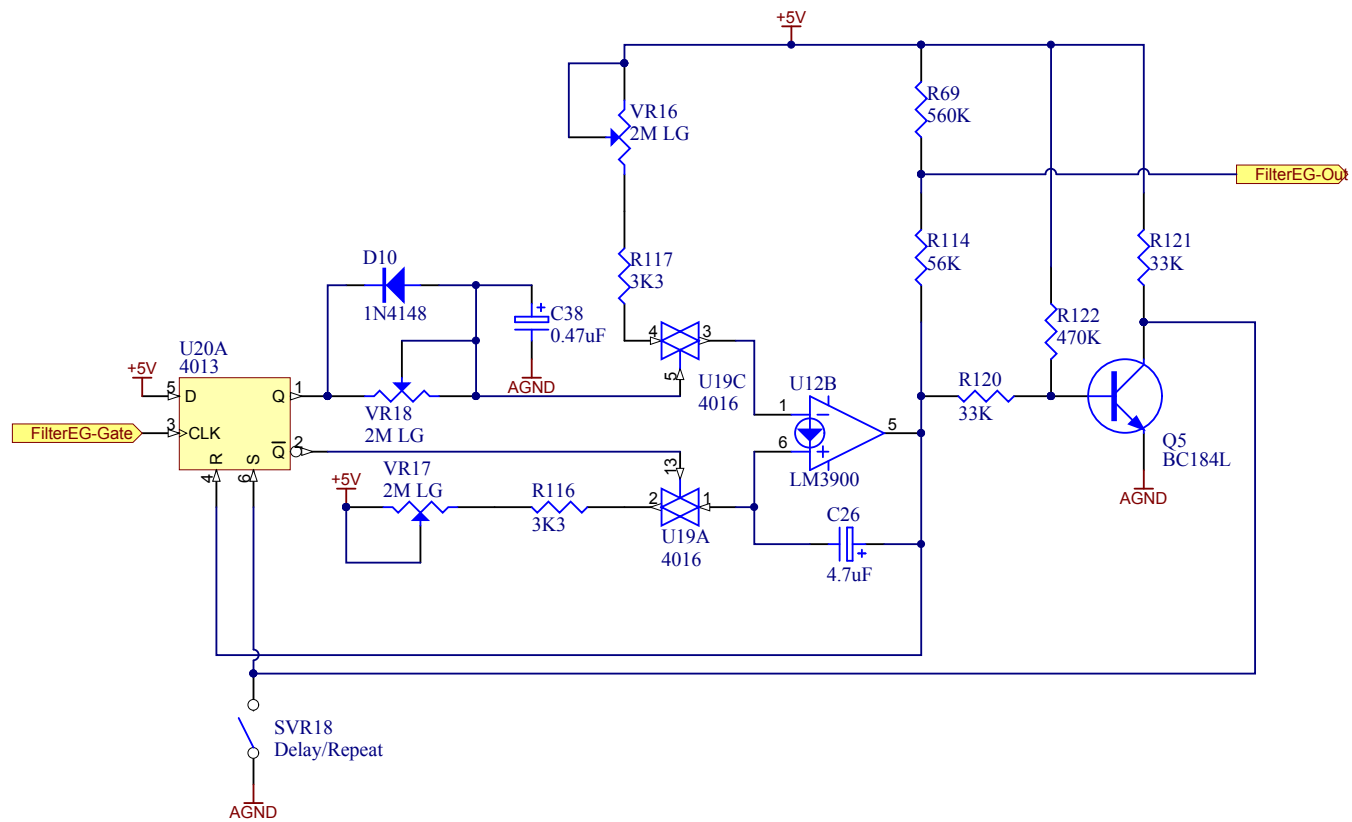


9 Follan Close  
Kariang  
NSW 2250  
Australia

## EDP WASP

### Voltage Controlled Filter

Size A3	FCSM No. 26/08/2013	DWG No. Filter.schdoc	Rev 1
Scale		Laurie Biddulph	Sheet 6 of 15

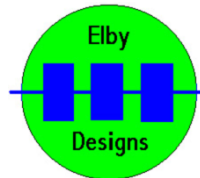
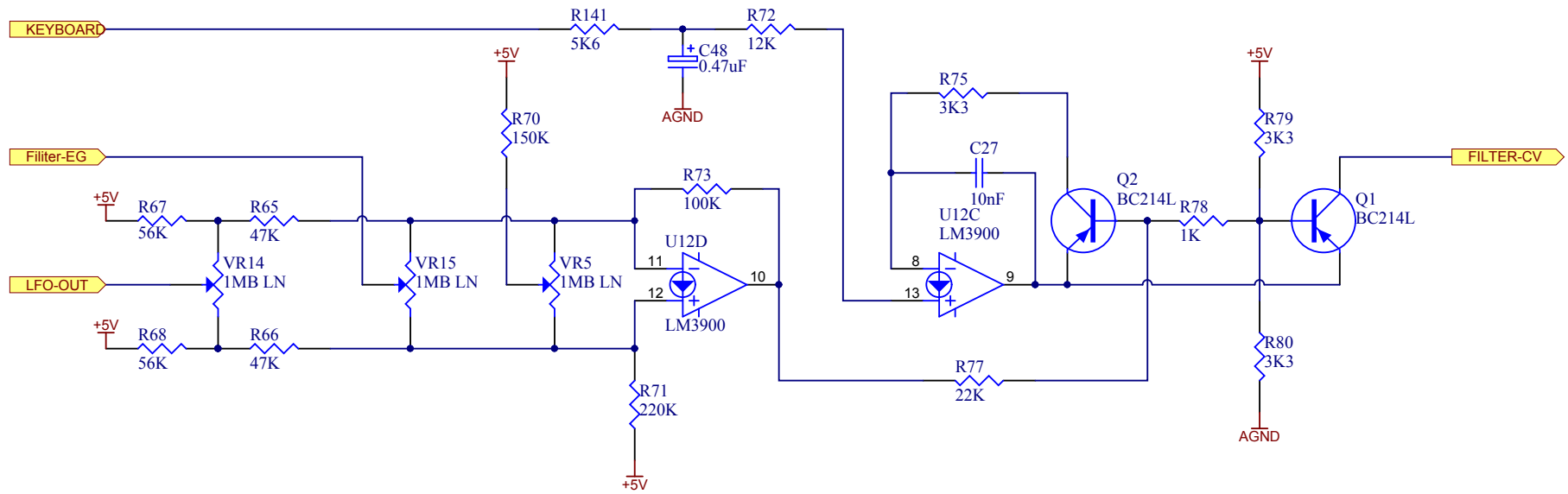


9 Follan Close  
Kariong  
NSW 2250  
Australia

# EDP WASP

## VCF Envelope Generator

Size A4	FCSM No. 26/08/2013	DWG No. VCF-EG.schdoc	Rev 1
Scale	Laurie Biddulph		Sheet 7 of 15



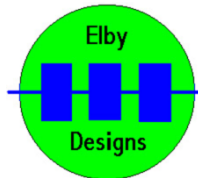
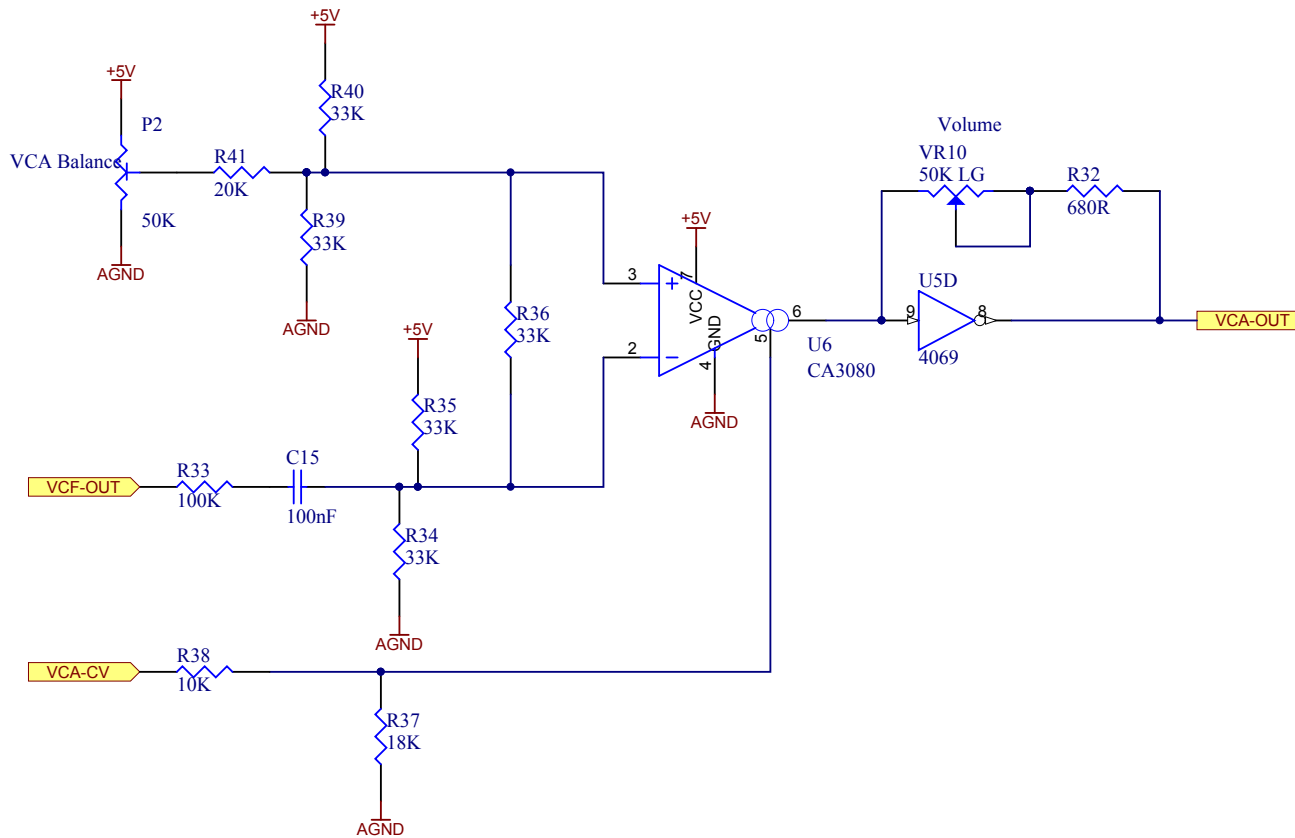
9 Follan Close  
Kariong  
NSW 2250  
Australia

# EDP WASP

## Filter Controller

Size A4	FCSM No. 26/08/2013	DWG No. FilterController.schdoc	Rev 1
Scale	Laurie Biddulph		Sheet 8 of 15





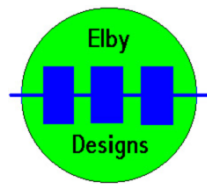
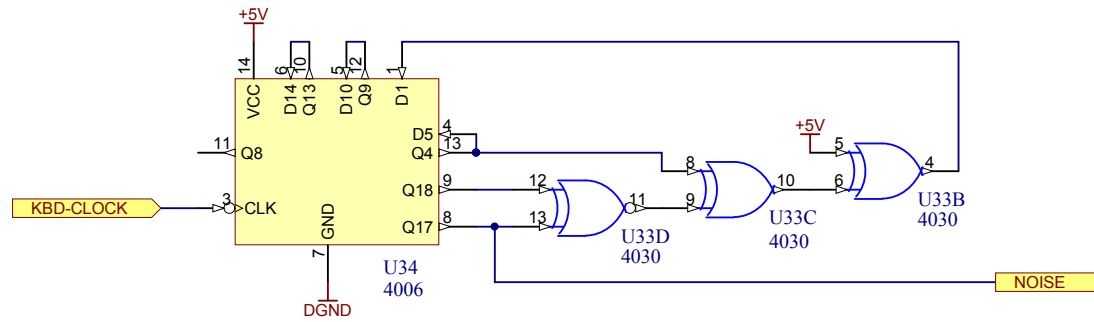
9 Follan Close  
Kariong  
NSW 2250  
Australia

## EDP WASP

### Voltage Controlled Amplifier

Size A4	FCSM No. 26/08/2013	DWG No. VCA.schdoc	Rev 1
Scale	Laurie Biddulph		Sheet 9 of 15



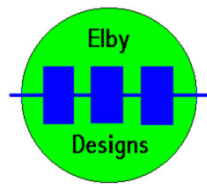
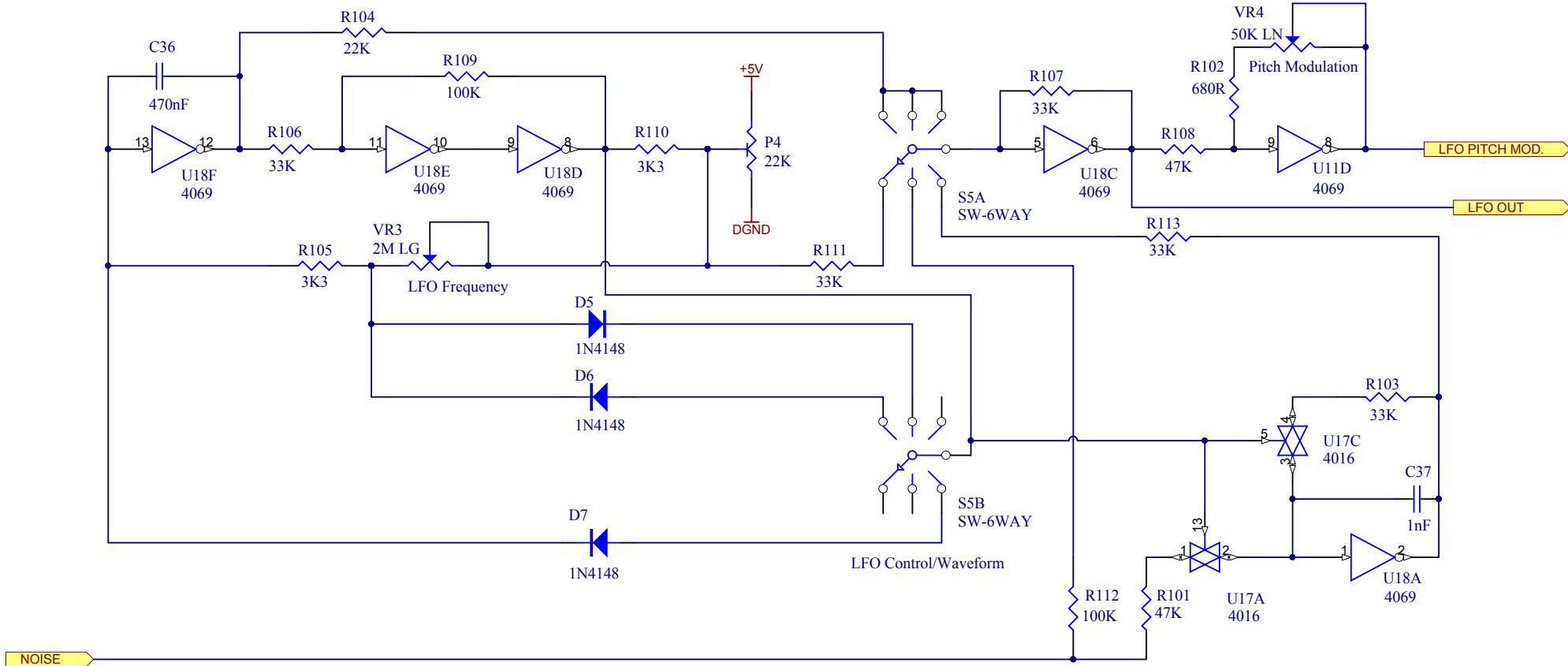


9 Follan Close  
Karing  
NSW 2250  
Australia

## EDP WASP

### NOISE Generator

Size A4	FCSM No. 26/08/2013	DWG No. Noise.schdoc	Rev 1
Scale	Laurie Biddulph		Sheet 11 of 15

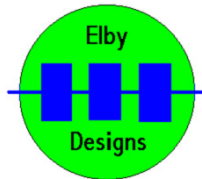
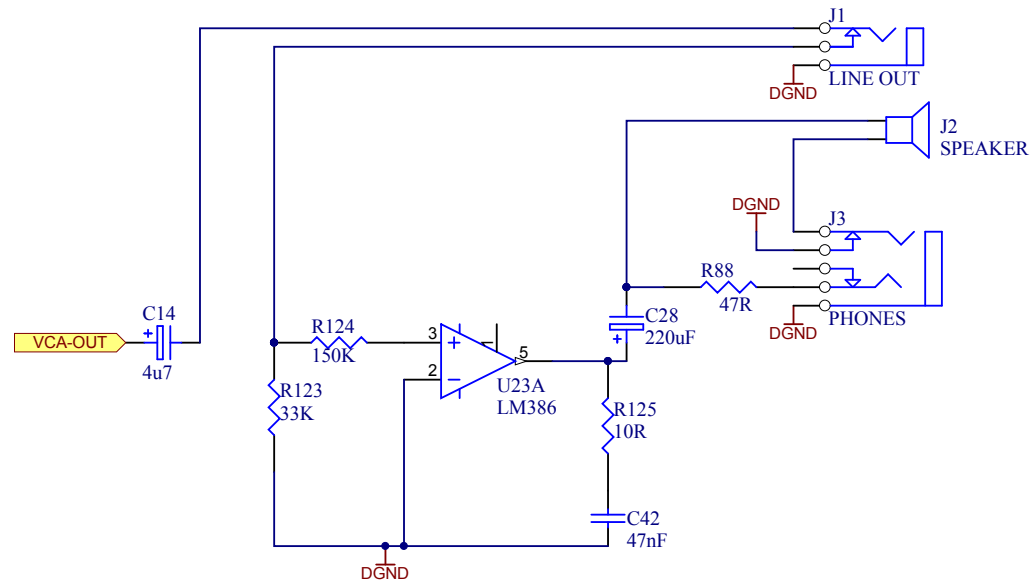


9 Follan Close  
Kariong  
NSW 2250  
Australia

# EDP WASP

## Low Frequency Oscillator

Size A4	FCSM No. 26/08/2013	DWG No. LFO.schdoc	Rev 1
Scale	Laurie Biddulph		Sheet 12 of 15

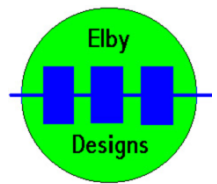
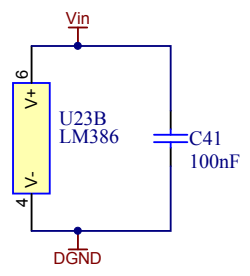
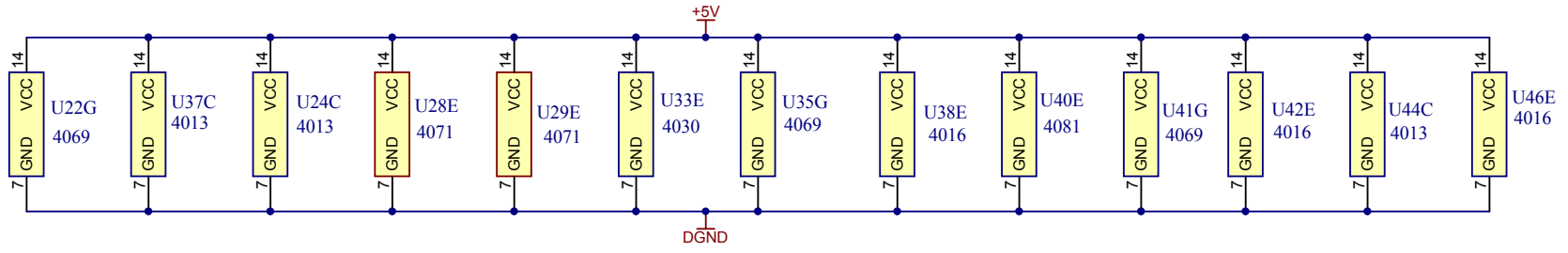
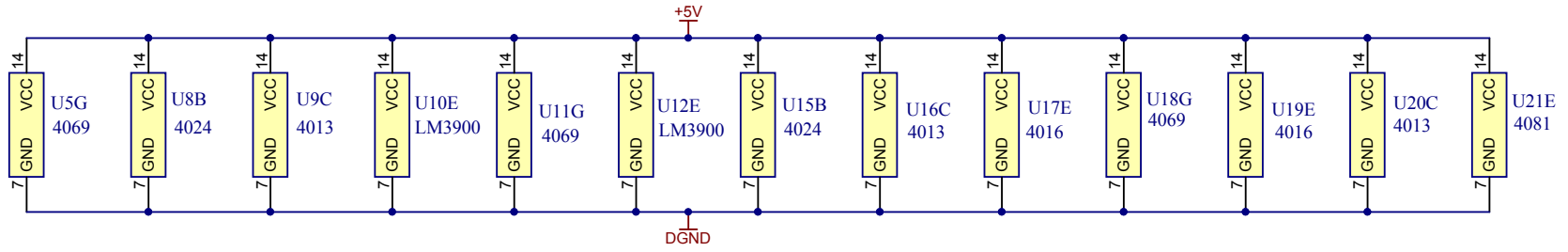
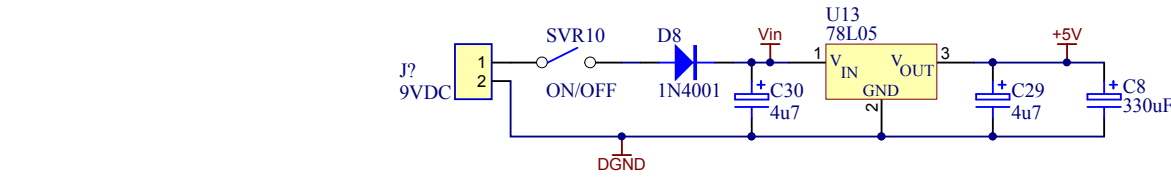


9 Follan Close  
Kariong  
NSW 2250  
Australia

## EDP WASP

### Audio Output Amplifier

Size A4	FCSM No. 26/08/2013	DWG No. audio.schdoc	Rev 1
Scale	Laurie Biddulph		Sheet 13 of 15

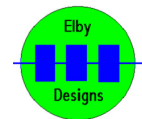
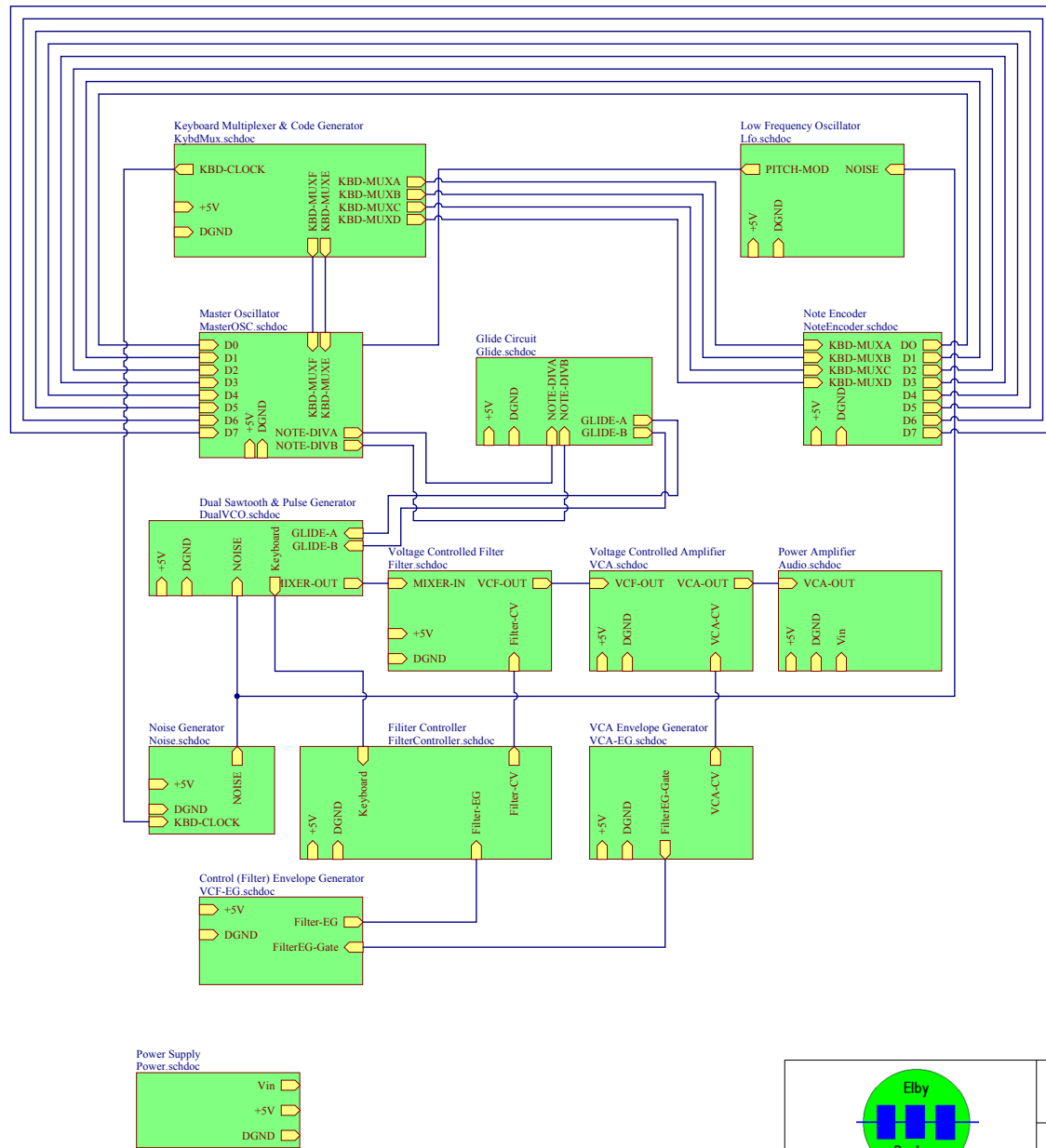


9 Follan Close  
Kariong  
NSW 2250  
Australia

# EDP WASP

## Power Supply

Size A4	FCSM No. 26/08/2013	DWG No. Power.schdoc	Rev 1
Scale		Laurie Biddulph	Sheet 14 of 15



9 Follan Close  
Kariang  
NSW 2250  
Australia

# EDP WASP

## Block Diagram

Size A3	FCSM No. 26/08/2013	DWG No. block-diagram.schdoc	Rev 1
Scale	Laurie Biddulph	Sheet 15 of 15	