

Studio 700 Assembly

Place all the parts out on a flat surface as shown in Figure 1. Depending on the configuration you have chosen, you may have more or less Skins (and associated M4 bolts).

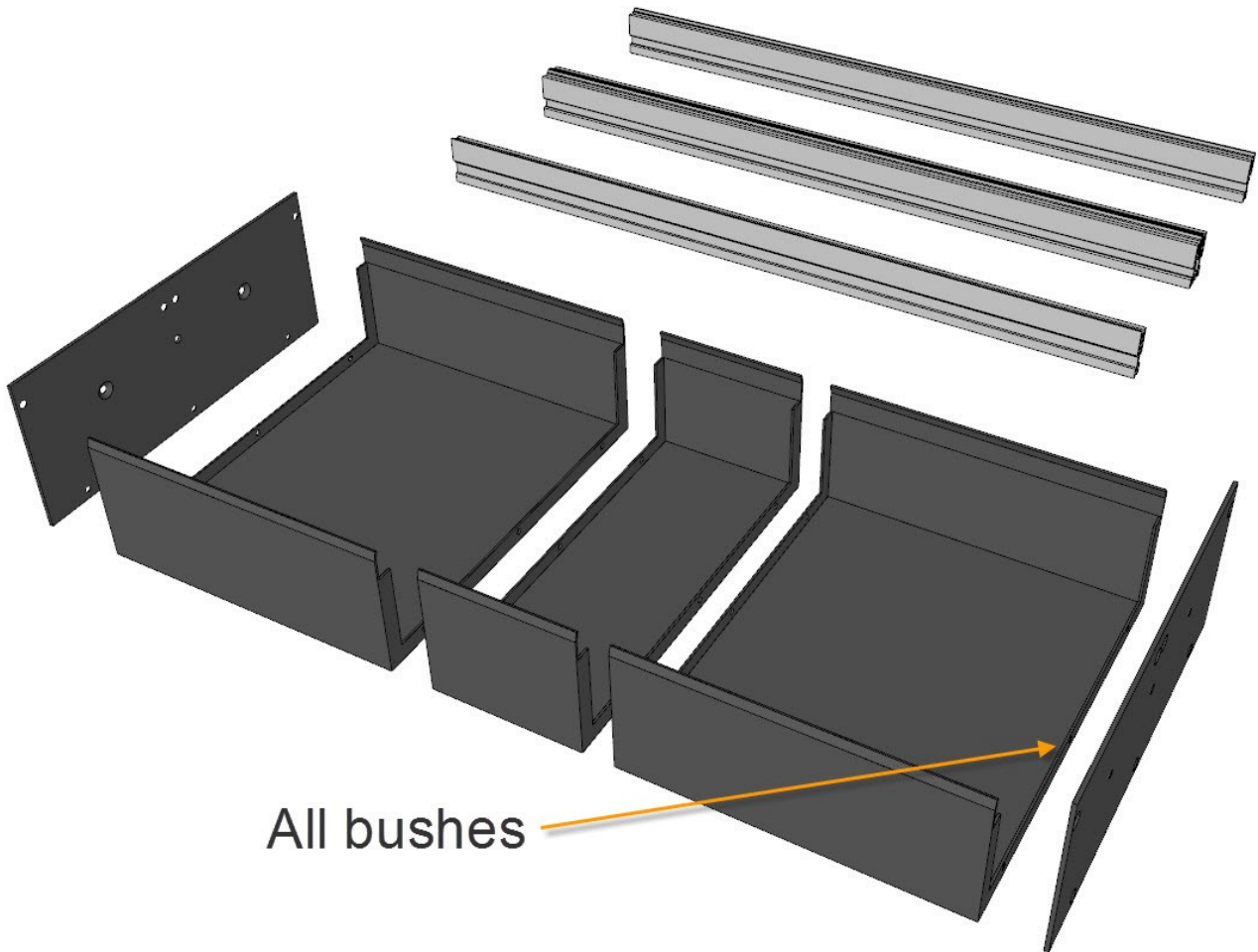
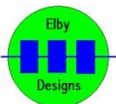
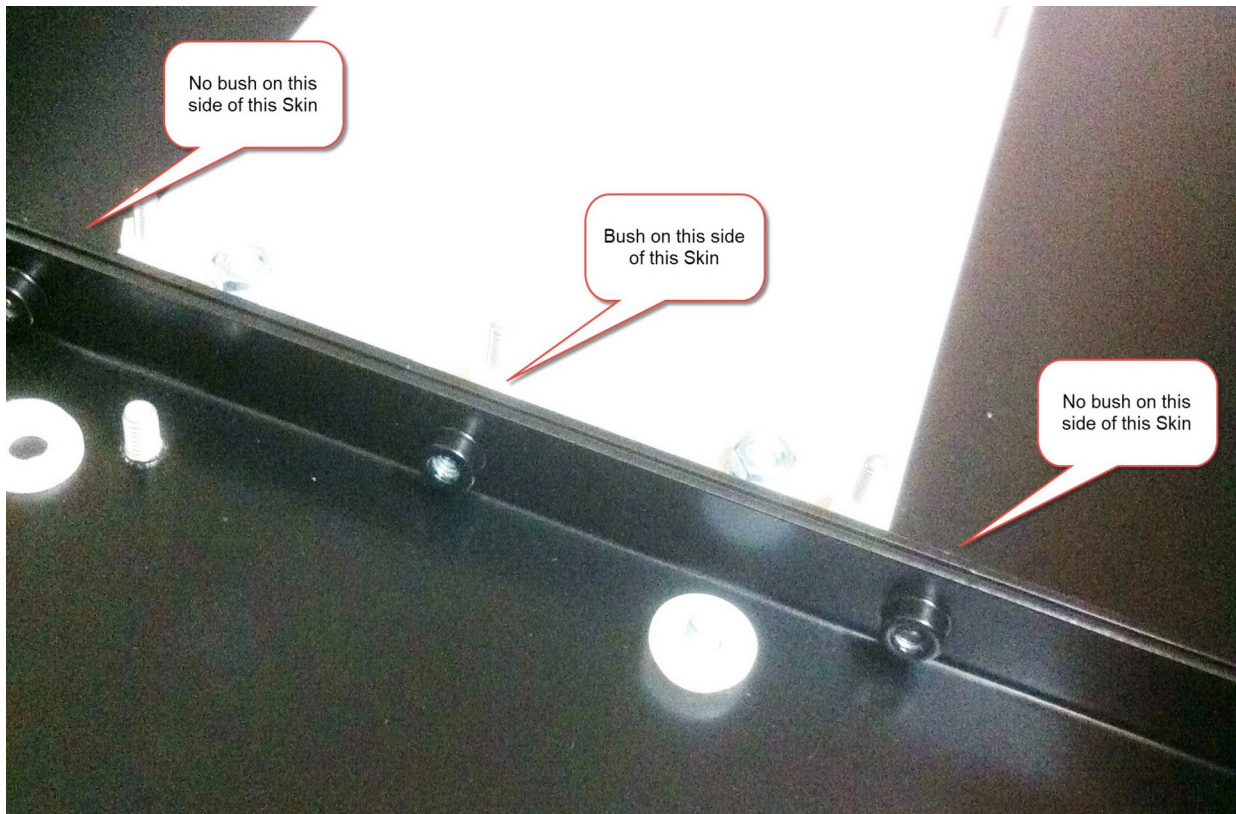


Figure 1 – Studio 700 parts laid out

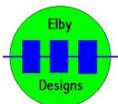
The Skins should all be orientated in the same direction with the power socket cutouts at the back.



Studio 700 Assembly



Join the Skins together using M4 pan-head bolts. These bolts will utilize the holes on the left-side of the skins without bushes as shown above.



Studio 700 Assembly

ED7xx Busboard Installation

We would now recommend installing your power distribution while you still have unhindered access to the inside of the case.



Fit [8x M3x12mm SEM bolts](#) to the [Busboard Carrier Plate](#) and secure using [M3 x 5mm nylon spacers](#) as [shown](#) at left.

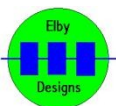


Install the [M4 cup washers](#) on to the appropriate busboard mounting locations as show at left. The washers are cupped on one side and this cupped side should be placed face-down over the bolt first so that the larger flat surface of the washer remains exposed.

Mount the Busboard Carrier Assembly in to the skins and secure using the [M4 Nut-Washers](#)

Install busboards and secure using [8x M3 nuts](#), check the orientation of each busboard before mounting to ensure that there is easy access between the power tabs on the busboard and their destination path.

Install [Busboard Power Sets](#) and [Busboard Cable](#) Sets as required for your selection of busboards and, the DC Power Cable if using the rear access hole for power entry. Refer to [DC_DISTRIBUTION_SYSTEMS](#) for guidance on this.



ELBY Designs - Laurie Biddulph

5 Dunning Avenue. George Town, TAS 7253, Australia

elby-designs@bigpond.com <http://www.elby-designs.com>

Studio 700 Assembly

Continue with the Enclosure assembly
(for clarity the following diagrams do not include the distribution system)

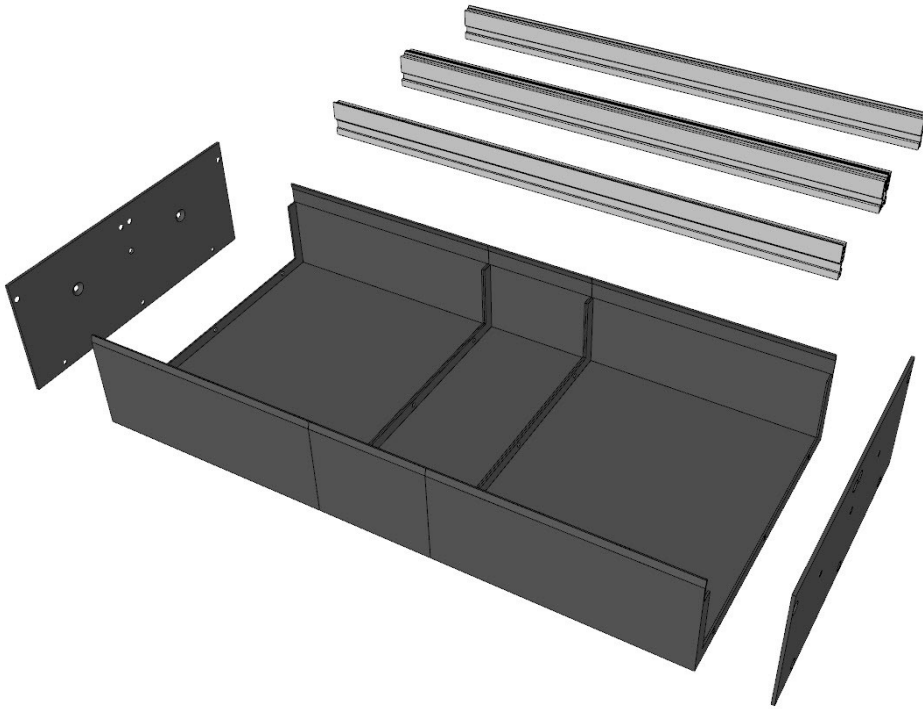


Figure 2 – Skins assembled

Attach one of the End Plates using M4 countersunk bolts as shown in Figure 3.

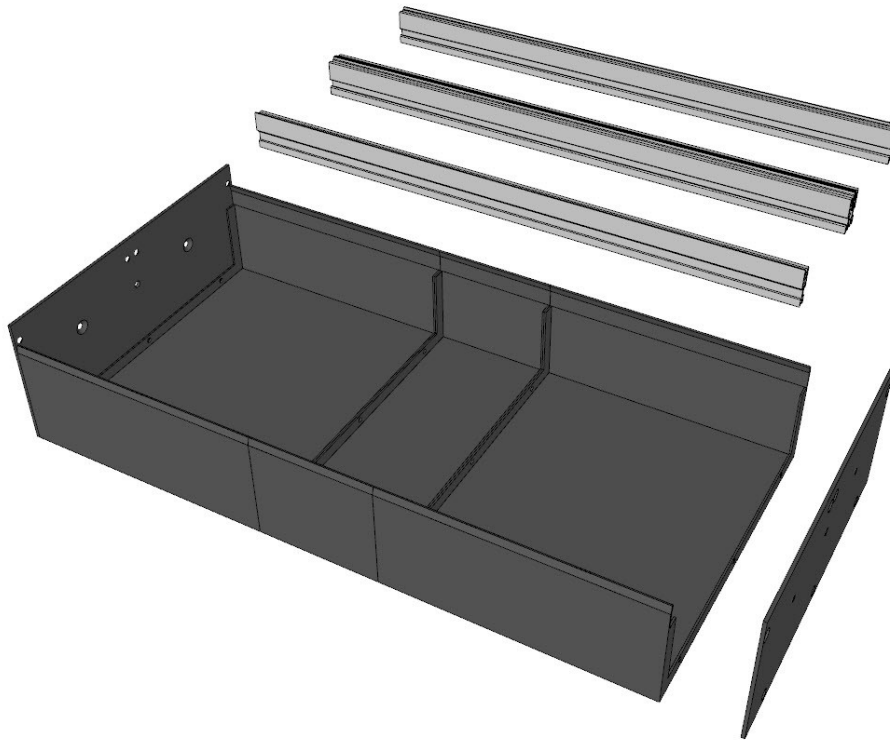
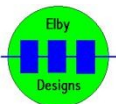


Figure 3 – End Plate attached



Studio 700 Assembly

Position the 2 outer Rails and secure using M5 countersunk bolts. These Rails should be lowered onto the Skin at a slight angle to allow the lip on the top of the Skin to slip in to the slot on the top face of the Rail. You should then be able to rotate the Rail back to vertical, as you do so the Rail should snap over the half-shears near the top edges of the Skin.

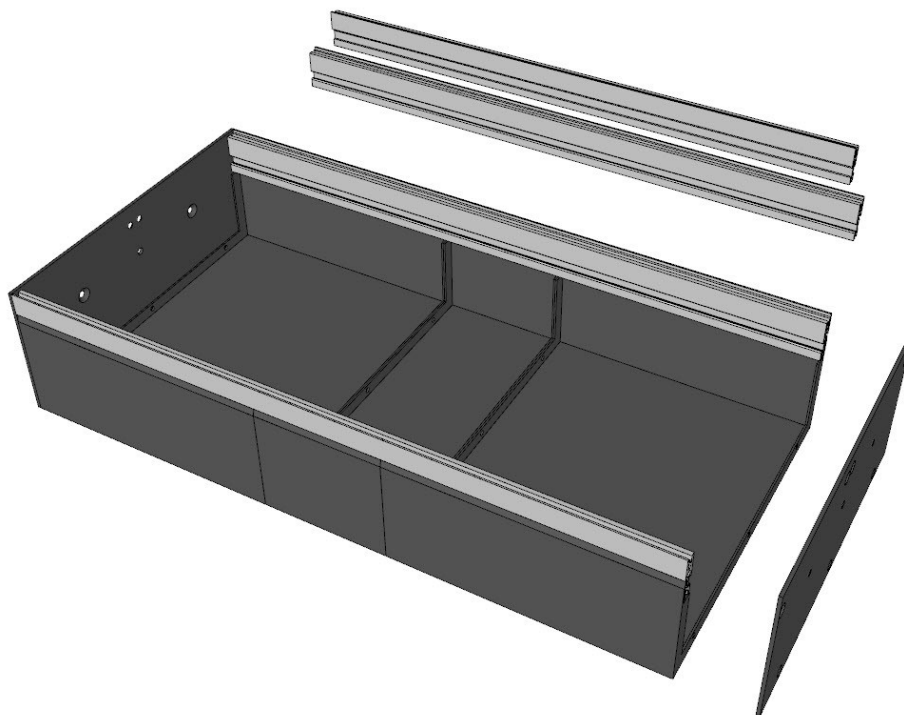
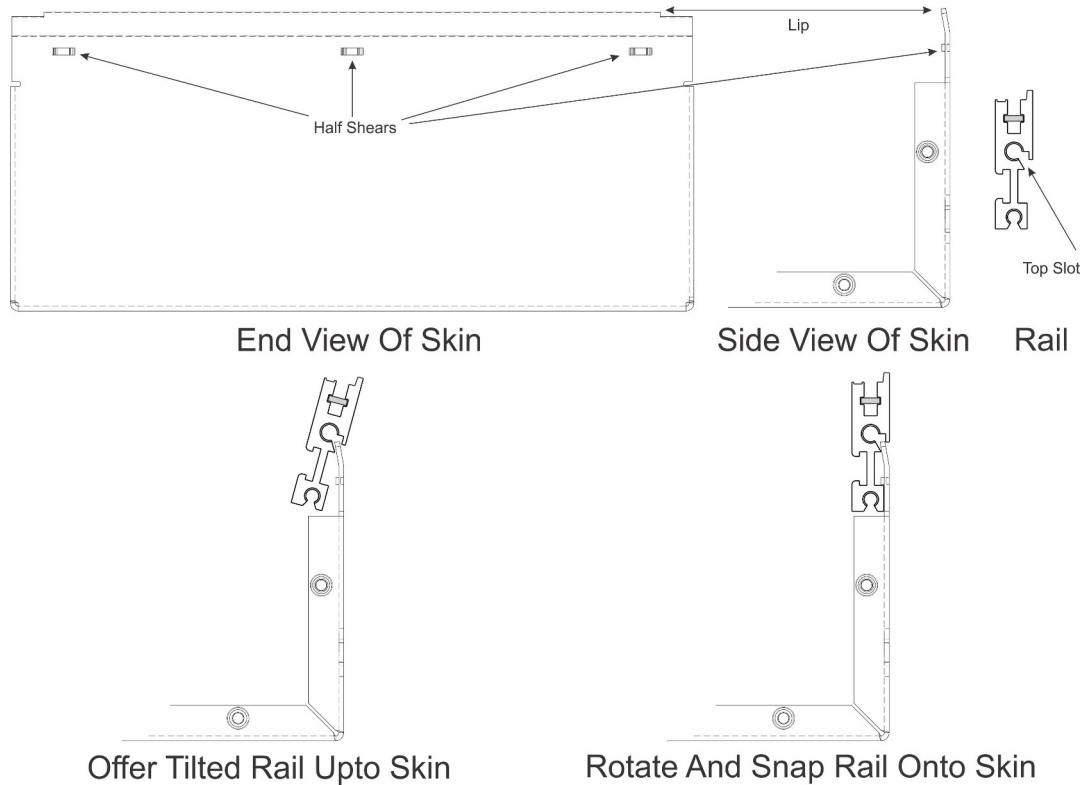
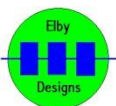


Figure 4 - Outer Rails attached



Studio 700 Assembly

There should be no gap between the top of the Skin (lip) and the top slot of the rail



Attach the other End Plate but only secure loosely :-

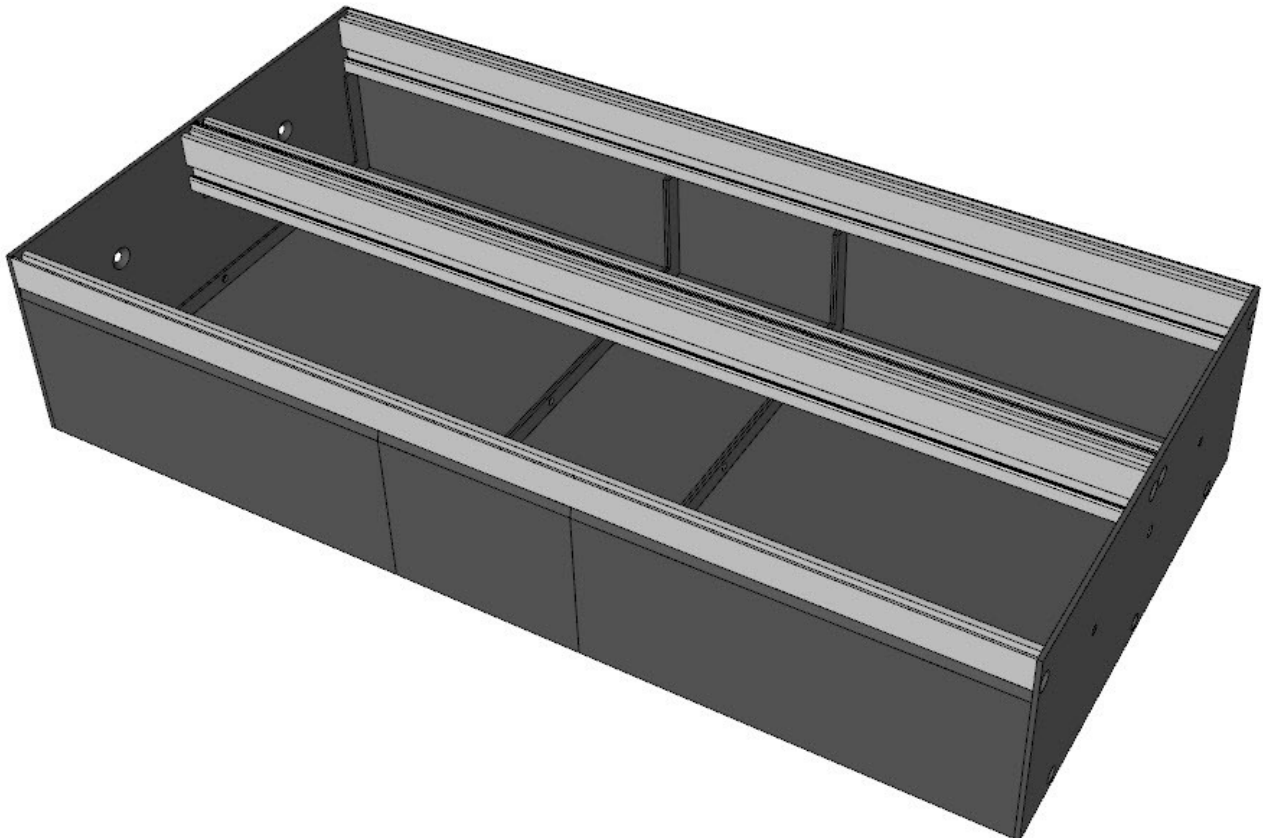
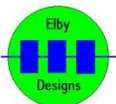
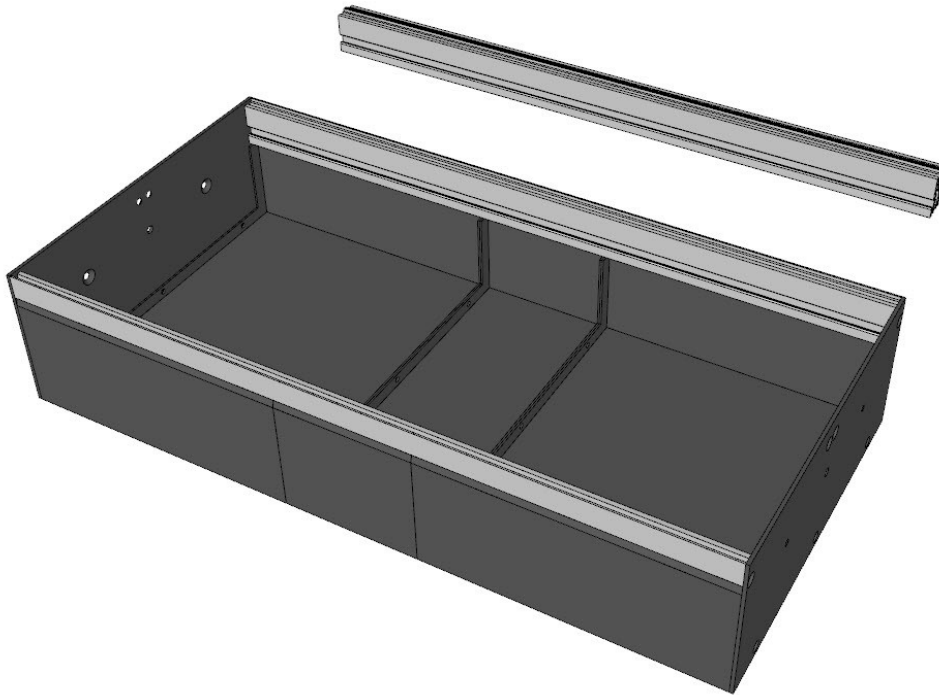


Figure 5 – Other End Plate attached (loosely)

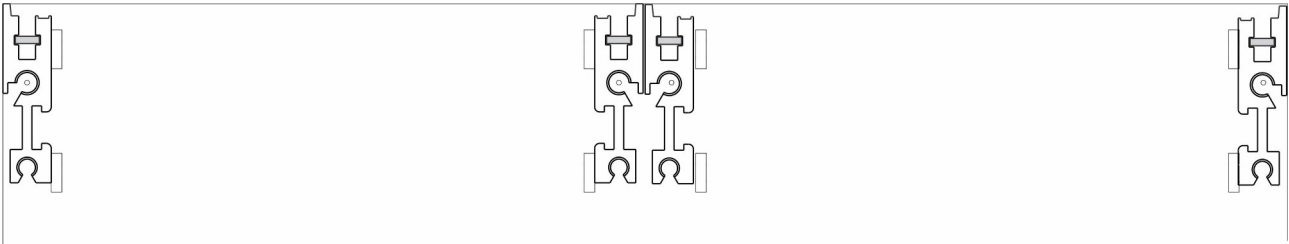


Studio 700 Assembly

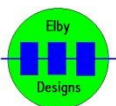


Insert one of the centre Rails making sure that the Rail ends rest against the Side Plate itself and not on the half-shears. Also ensure that the lip on the Rail is furthest from its partner rail for each 3U section.

Loosely secure using M5 countersunk bolts. Repeat for the 2nd center Rail (the 2 lip faces should now be closest together)

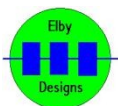


Tighten up all bolts ensuring that the Rails are correctly aligned.



Studio 700 Assembly

If using our Studio End Cheeks, then secure them in to place using the M6 countersunk bolts. Note that the End Cheeks have 2 'extensions'. These are the 'feet' for the assembly and should be orientated furthest away from the Rails..



ELBY Designs - Laurie Biddulph

5 Dunning Avenue. George Town, TAS 7253, Australia

elby-designs@bigpond.com <http://www.elby-designs.com>